



NORDHAVN 86



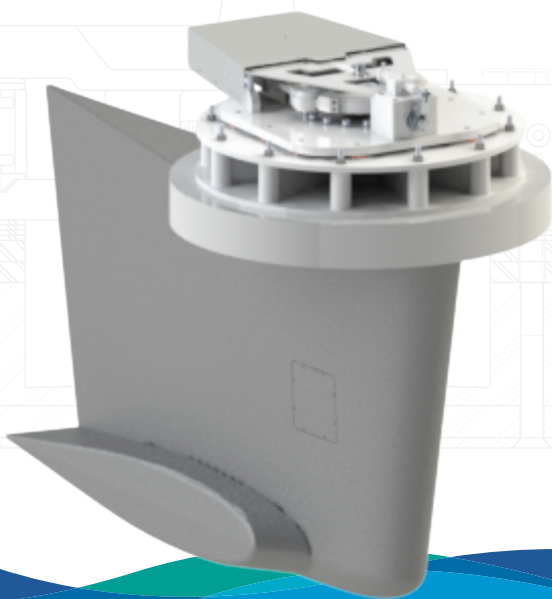
ALLOY 40 M



NORTHERN MARINE 151

ABT·TRAC®

440-640 DIGITAL HYDRAULIC STABILIZERS



Powered by TRACLink™ our fully integrated control system.

TRAC Digital Stabilizers

Exceptional comfort in all sea states. TRAC Digital Stabilizers dramatically improve ride comfort in any wave condition or angle. Our advanced 3-term control system detects vessel motion in real time and instantly adjusts fin position to counteract roll.

Optimized fin performance

TRAC's exclusive Fin and Winglet design is computer-optimized to:

- Generate more anti-roll force
- Reduce hydrodynamic drag
- Deliver smoother, more efficient stabilization than conventional fins

Effortless control, fully automatic

- Intuitive touch-screen LCD user panel
- One-touch activation
- Automatically adapts to changing sea state, wave angle, and vessel speed

Built for Reliability & Safety

Fail-safe actuator design

- Mechanical fin-locking when required
- No need to access the bilge to manually pin fins

Heavy-duty construction

- Intentional oversized load-bearing components
- Double-sealed shaft housings that require no maintenance between haul-outs

Faster installation

- Inboard hull flange mounting system for faster, cleaner installation

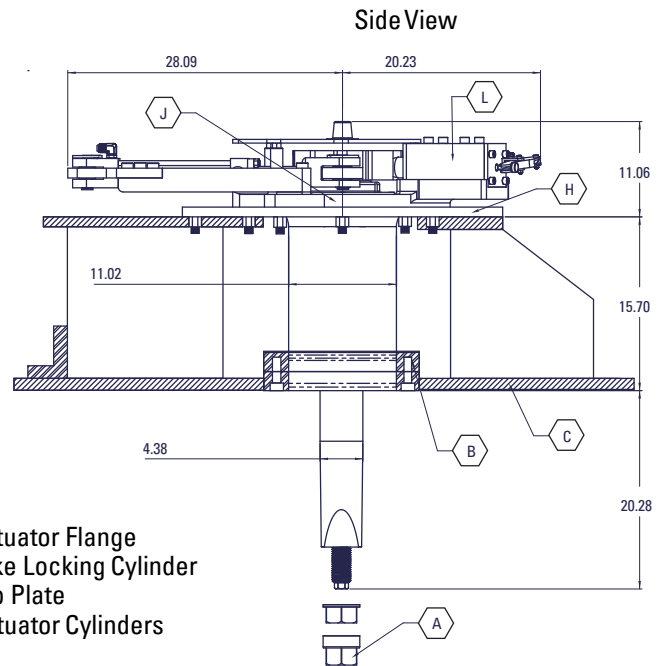
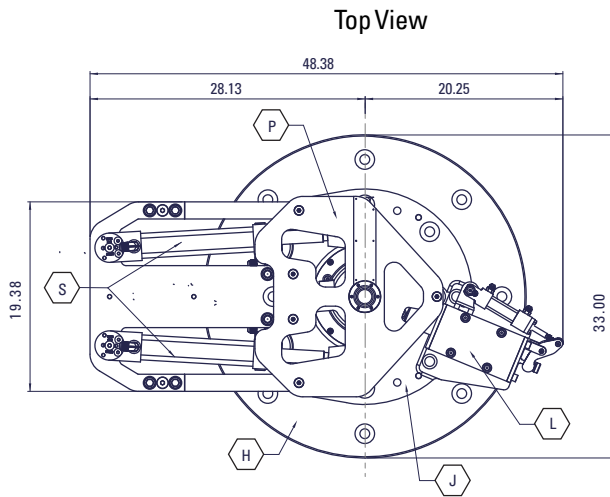
Factory-ready delivery

- Systems arrive ready to install
- Factory tested
- Custom cabling for every vessel

For Exceptional Performance and Unmatched Support, Choose TRAC

ABT·TRAC®

6108 188th Street N.E., Bldg. A100, Arlington, WA USA
TEL WA: 425-481-2296 CA: 707-586-3155
www.thrusters.com



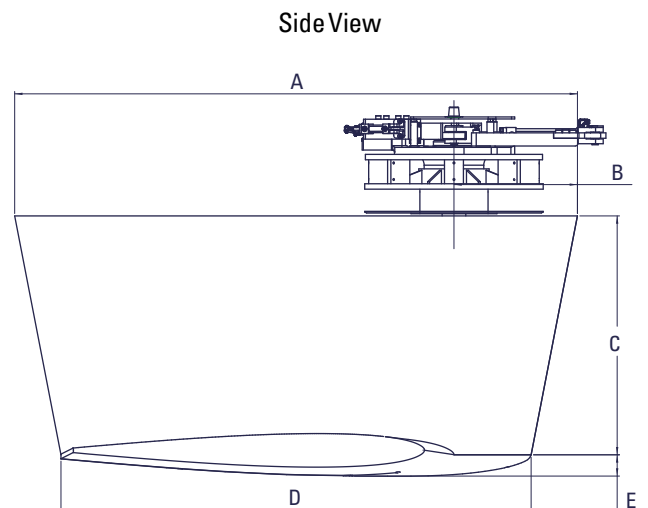
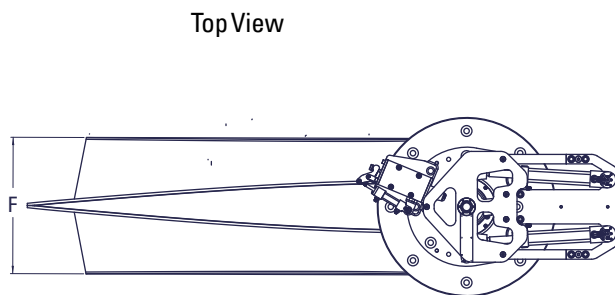
- A. Fin Nut
- B. Hull Flange Assembly
- C. Augmented Hull Thickness (Note 1)
- E. Platform Flange and Gussets (Note 2)
- H. Companion Flange
- J. Actuator Flange
- L. Yoke Locking Cylinder
- P. Top Plate
- S. Actuator Cylinders

Notes:

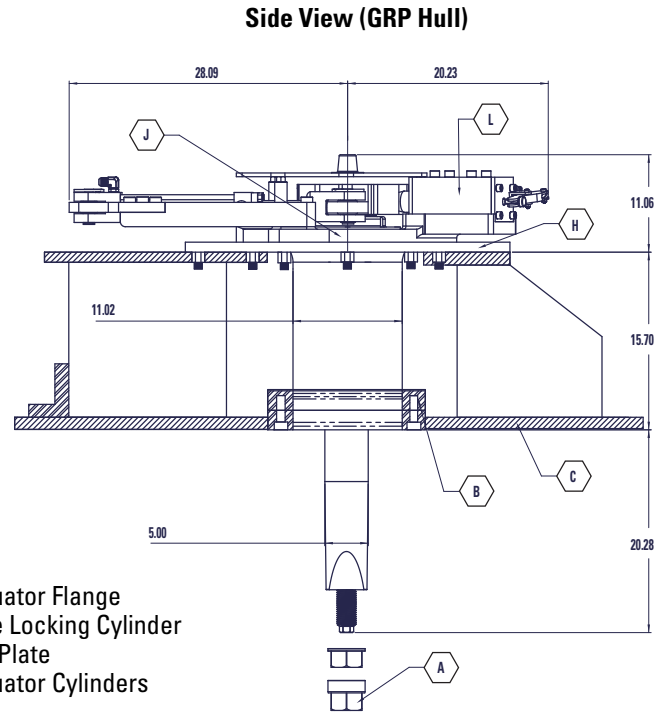
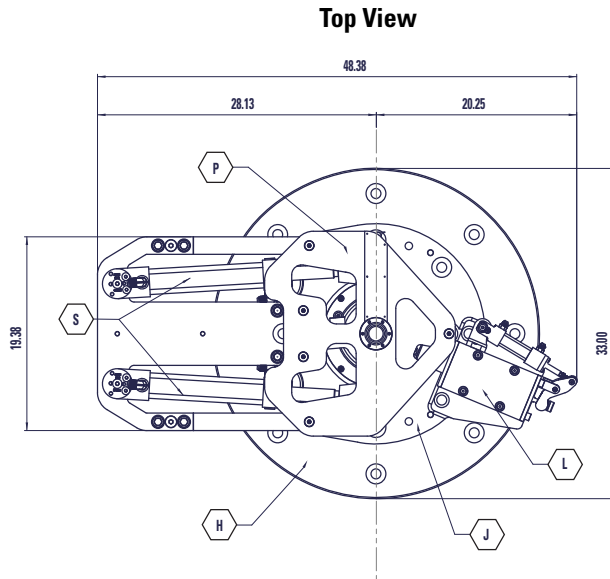
1. It is the responsibility of the installer to determine what reinforcement measures should be taken to properly strengthen the hull for withstanding forces that may be encountered if the fin or the fin shaft strikes an immovable object while the vessel is underway. Recommendations made by Arcturus Marine are to be used as starting guidelines only.
2. Platform Flange with integrated gussets, hull framing and stringers, are provided by the customer according to the naval architect's specifications. For steel hull vessels the platform may be omitted when gussets are welded directly to the Actuator Companion Flange.

	A	B	C	D	E	F
SIZE	Inch (cm)	Inch (cm)	Inch (cm)	Inch (cm)	Inch (cm)	Inch (cm)
20.0x-9%	104.1 (264.3)	22.8 (57.9)	44.2 (112.3)	86.9 (220.7)	4.0 (10.2)	25.2 (64.0)

Fins designated with an "X" suffix are extended chord fins for use in Stabilization At Rest (STAR™) systems.



Dimensions shown for reference only and are subject to change. Do not use for installation.

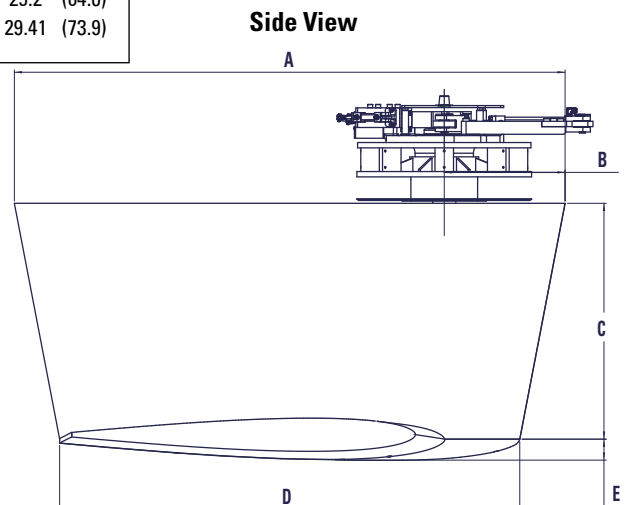
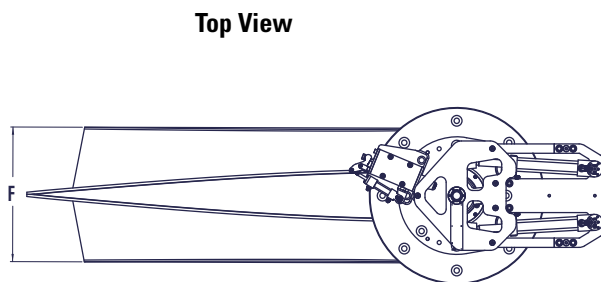


- A. Fin Nut
- B. Hull Flange Assembly
- C. Augmented Hull Thickness (Note 1)
- E. Platform Flange and Gussets (Note 2)
- H. Companion Flange
- J. Actuator Flange
- L. Yoke Locking Cylinder
- P. Top Plate
- S. Actuator Cylinders

Notes:

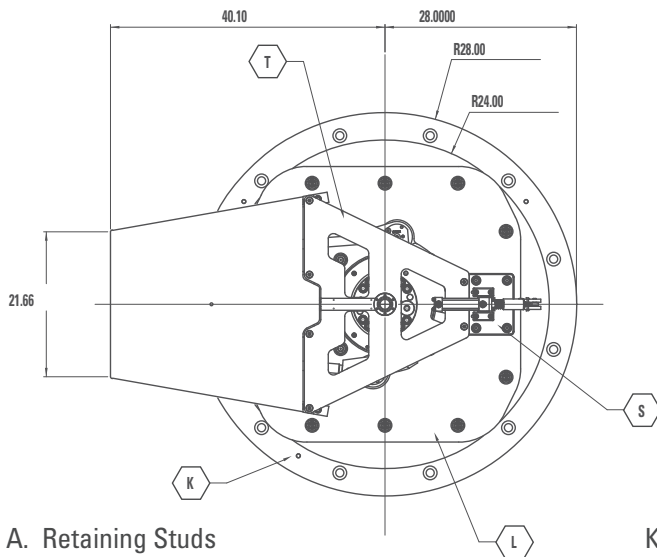
1. It is the responsibility of the installer to determine what reinforcement measures should be taken to properly strengthen the hull for withstanding forces that may be encountered if the fin or the fin shaft strikes an immovable object while the vessel is underway. Recommendations made by Arcturus Marine are to be used as starting guidelines only.
2. Platform Flange with integrated gussets, hull framing and stringers, are provided by the customer according to the naval architect's specifications. For steel hull vessels the platform may be omitted when gussets are welded directly to the Actuator Companion Flange.
3. Dimensions shown are for reference only and are subject to change. Do not use for installation.

	A		B		C		D		E		F	
SIZE	Inch	(cm)	Inch	(cm)	Inch	(cm)	Inch	(cm)	Inch	(cm)	Inch	(cm)
20.0x-9%	104.1	(264.3)	22.8	(57.9)	44.2	(112.3)	86.9	(220.7)	4.0	(10.2)	25.2	(64.0)
26.0X	118.5	(301.0)	26.0	(66.0)	50.3	(127.8)	99.0	(251.5)	5.9	(15.0)	29.41	(73.9)

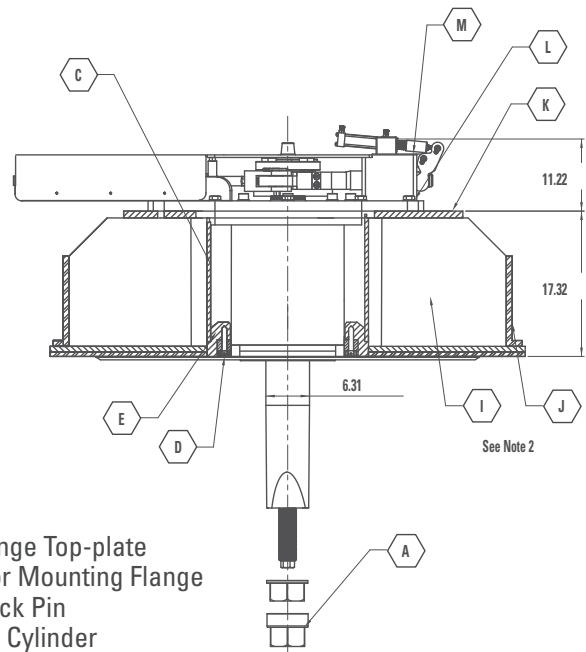


Dimensions shown for reference only and are subject to change. Do not use for installation.

Top View



Side View



- A. Retaining Studs
- C. Weld-in Hull Flange (WHF)
- D. WHF Cover Plate
- E. WHF Seal-ring
- H. Augmented Hull Thickness (Note 1)
- I. Hull Flange Gusset (Note 2)
- J. Hull Framing (Note 2)

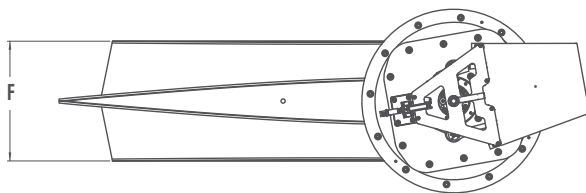
- K. Hull Flange Top-plate
- L. Actuator Mounting Flange
- M. Yoke Lock Pin
- S. Locking Cylinder
- T. Actuator Top-Plate
- X. Actuator Cylinder

Notes:

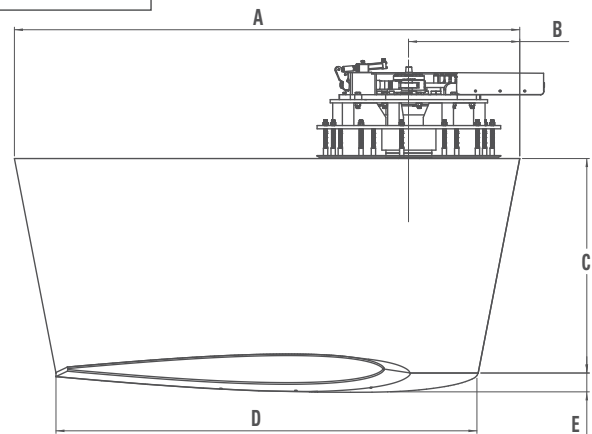
1. It is the responsibility of the installer to determine what reinforcement measures should be taken to properly strengthen the hull for withstanding forces that may be encountered if the fin or the fin shaft strikes an immovable object while the vessel is underway. Recommendations made by Arcturus Marine are to be used as starting guidelines only.
2. For metal hull installations, the Weld-in Flange is to be supported by integrated gussets, hull framing and stringers which are provided by the installer according to the naval architect's specifications.

FIN	A	B	C	D	E	F
SIZE	Inch (cm)	Inch (cm)	Inch (cm)	Inch (cm)	Inch (cm)	Inch (cm)
34.0x	135.5 (344.2)	29.1 (73.9)	57.4 (145.8)	114.0 (289.6)	6.8 (17.4)	33.3 (84.5)

Top View



Side View



Dimensions shown for reference only and are subject to change. Do not use for installation.