



KROGEN 44



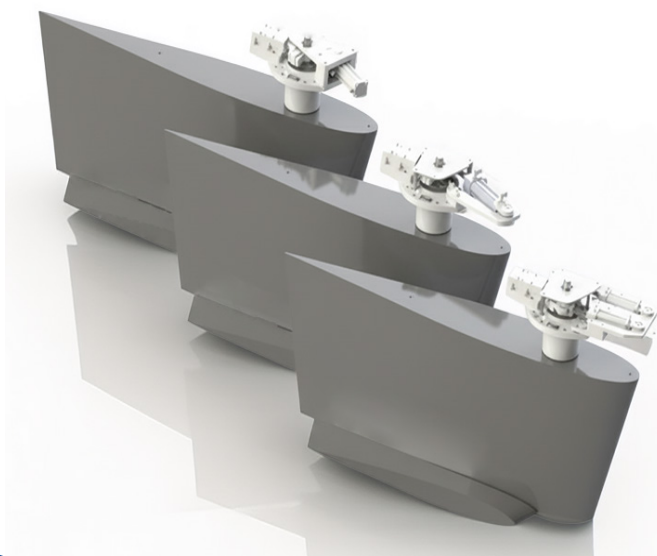
PRINCESS 72



AZIMUT 116

# ABT·TRAC®

## 220-370 DIGITAL HYDRAULIC STABILIZERS



Powered by TRACLink™  
Our fully integrated control  
system.

### TRAC Digital Stabilizers

Exceptional comfort in all sea states. TRAC Digital Stabilizers dramatically improve ride comfort in any wave condition or angle. Our advanced 3-term control system detects vessel motion in real time and instantly adjusts fin position to counteract roll.

### Optimized fin performance

TRAC's exclusive Fin and Winglet design is computer-optimized to:

- Generate more anti-roll force
- Reduce hydrodynamic drag
- Deliver smoother, more efficient stabilization than conventional fins

### Effortless control, fully automatic

- Intuitive touch-screen LCD user panel
- One-touch activation
- Automatically adapts to changing sea state, wave angle, and vessel speed

### Built for Reliability & Safety

#### Fail-safe actuator design

- Mechanical fin-locking when required
- No need to access the bilge or manually pin fins

#### Heavy-duty construction

- Intentional oversized load-bearing components
- Double-sealed shaft housings that require no maintenance between haul-outs

#### Faster installation

- Inboard hull flange mounting system for faster, cleaner installation

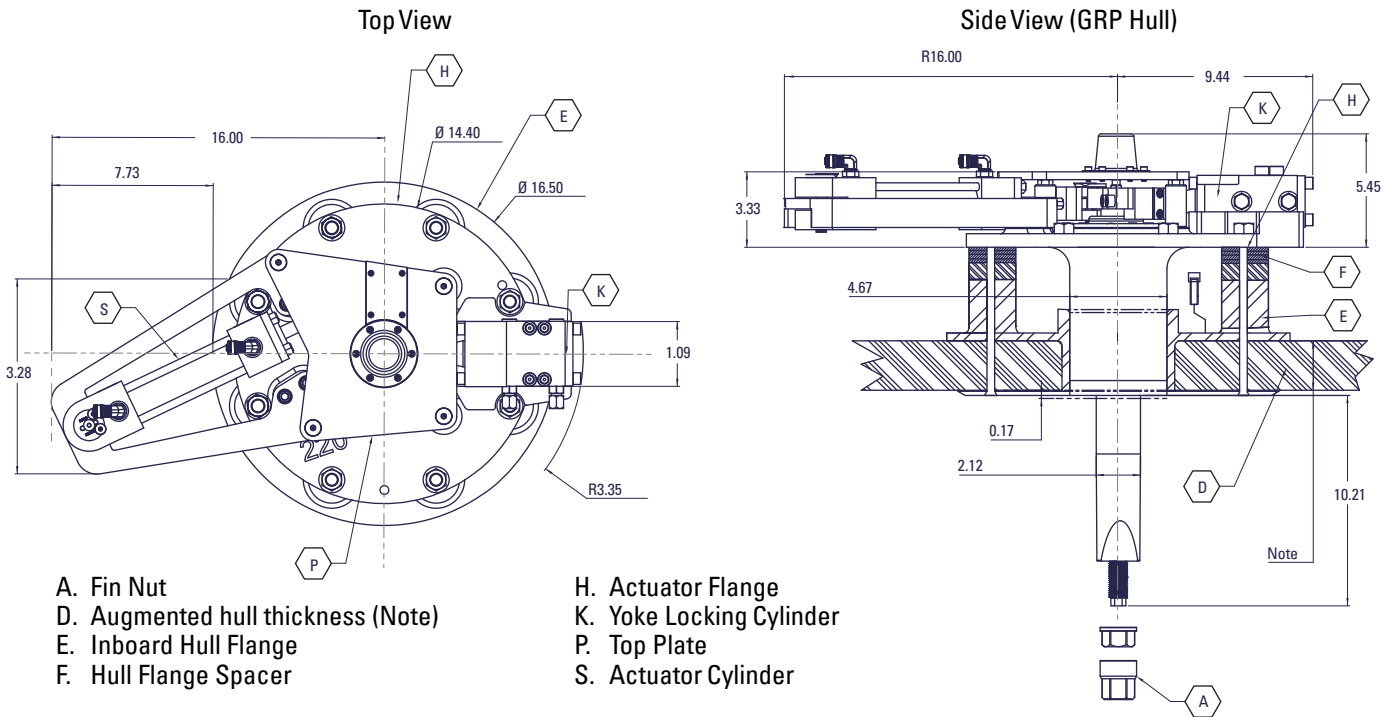
#### Factory-ready delivery

- Systems arrive ready to install
- Factory tested
- Custom cabling for every vessel

For Exceptional Performance and Unmatched Support, Choose TRAC



6108 188th Street N.E., Bldg. A100, Arlington, WA USA  
TEL WA: 425-481-2296 CA: 707-586-3155  
www.thrusters.com

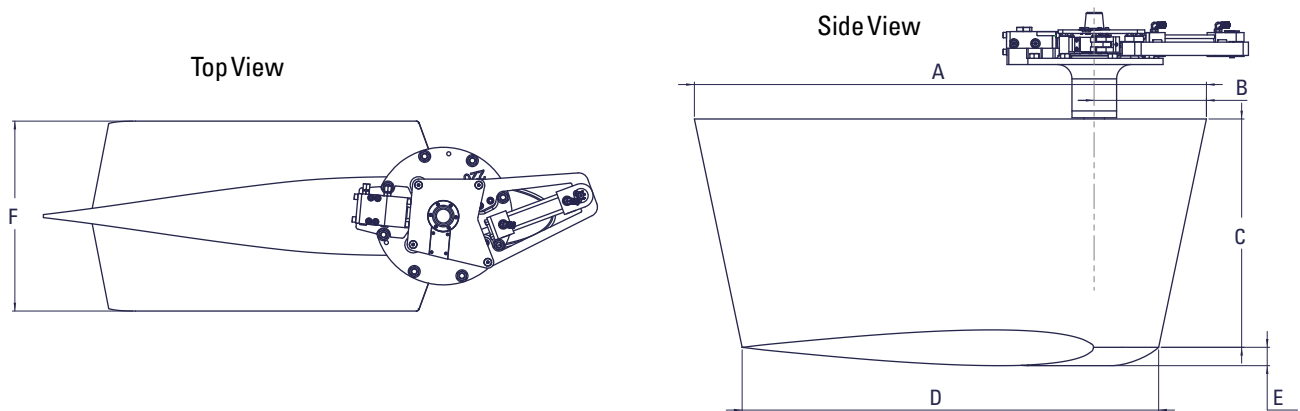


- A. Fin Nut
- D. Augmented hull thickness (Note)
- E. Inboard Hull Flange
- F. Hull Flange Spacer
- H. Actuator Flange
- K. Yoke Locking Cylinder
- P. Top Plate
- S. Actuator Cylinder

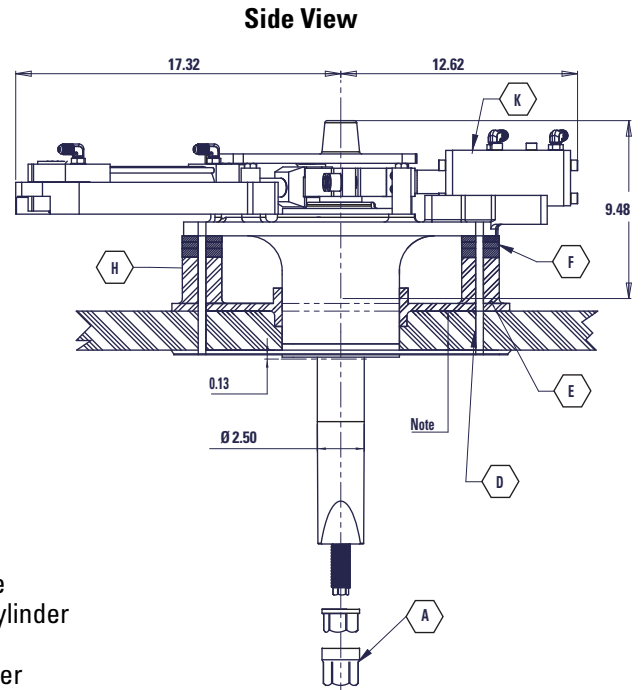
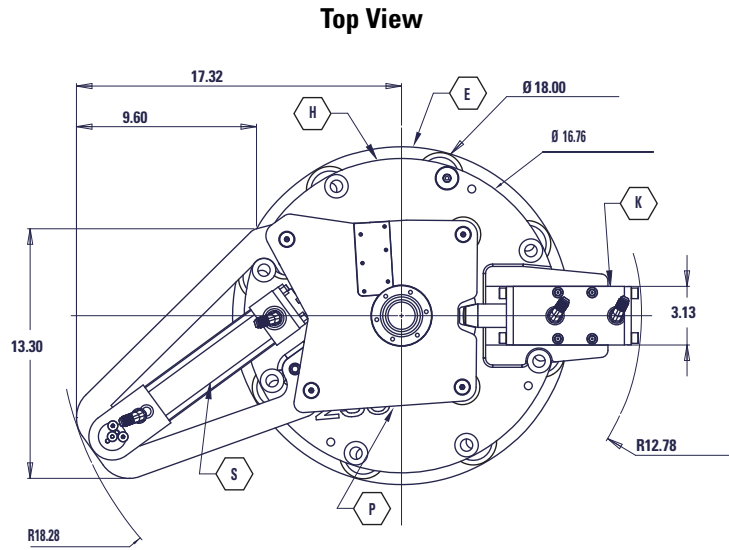
**Note:**

It is the responsibility of the installer to determine what reinforcement measures should be taken to properly strengthen the hull for withstanding forces that may be encountered if the fin or the fin shaft strikes an immovable object while the vessel is underway. Recommendations made by ABT-TRAC are to be used as starting guidelines only.

FIN MEASUREMENTS			A	B	C	D	E	F
SIZE	Sq.ft.	m <sup>2</sup>	Inch (cm)	Inch (cm)	Inch (cm)	Inch (cm)	Inch (cm)	Inch (cm)
6.0X-9%	8.3	0.77	52.5 (133.4)	11.7 (29.7)	23.9 (60.7)	43.6 (110.7)	1.7 (4.3)	12.0 (30.5)



Dimensions shown for reference only and are subject to change. Do not use for installation.

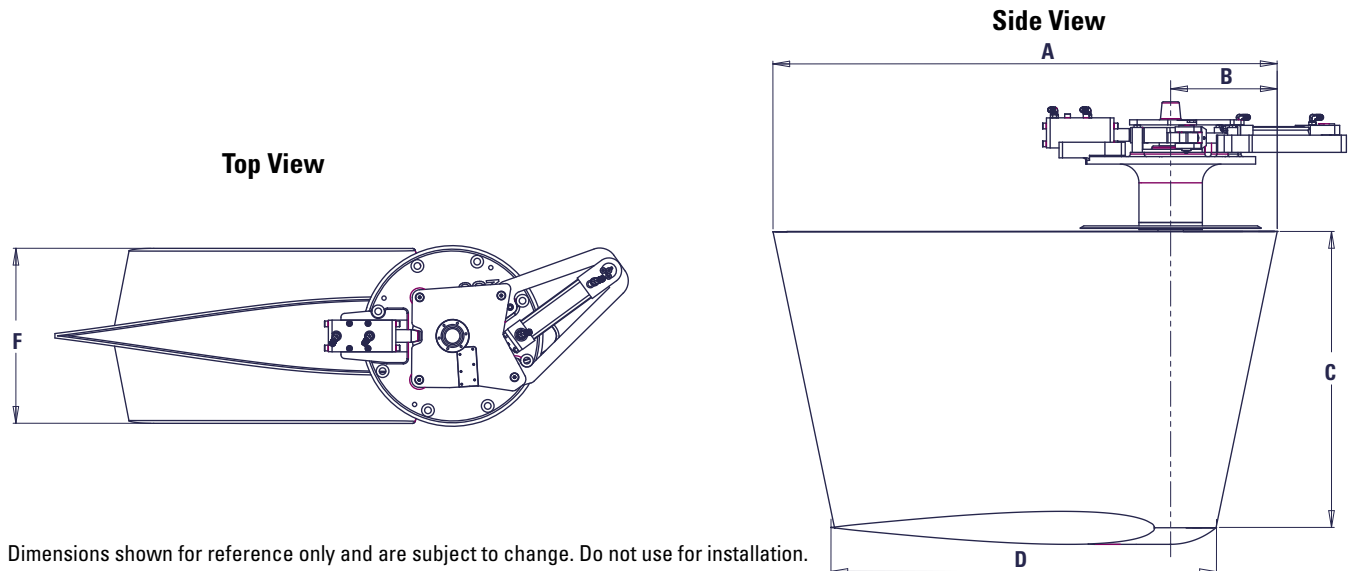


- A. Fin Nut
- D. Augmented hull thickness (Note)
- E. Inboard Hull Flange
- F. Hull Flange Spacer
- H. Actuator Flange
- K. Yoke Locking Cylinder
- P. Top Plate
- S. Actuator Cylinder

**Note:**

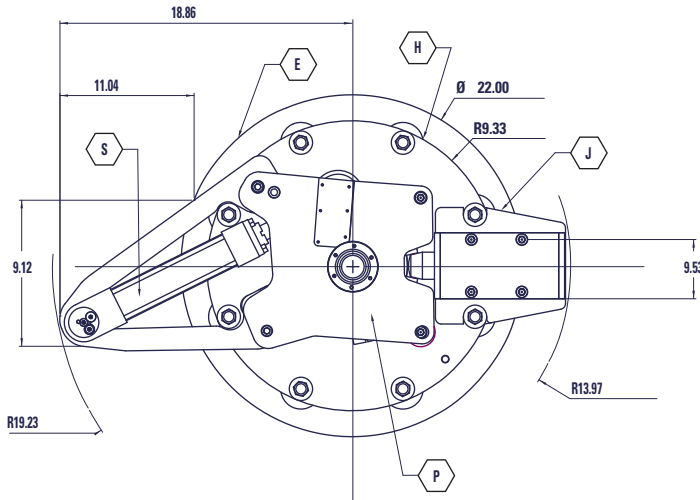
It is the responsibility of the installer to determine what reinforcement measures should be taken to properly strengthen the hull for withstanding forces that may be encountered if the fin or the fin shaft strikes an immovable object while the vessel is underway. Recommendations made by Arcturus Marine are to be used as starting guidelines only.

FIN MEASUREMENTS			A	B	C	D	E	F
SIZE	Sq.ft.	m <sup>2</sup>	Inch (cm)	Inch (cm)	Inch (cm)	Inch (cm)	Inch (cm)	Inch (cm)
6.0X-9%	8.3	0.77	52.5 (133.4)	11.7 (29.7)	23.9 (60.7)	43.6 (110.7)	1.7 (4.3)	12.0 (30.5)
7.5X-9%	10.5	0.98	60.8 (154.5)	13.3 (33.8)	26.9 (68.3)	49.7 (126.2)	2.1 (5.4)	15.5 (39.3)

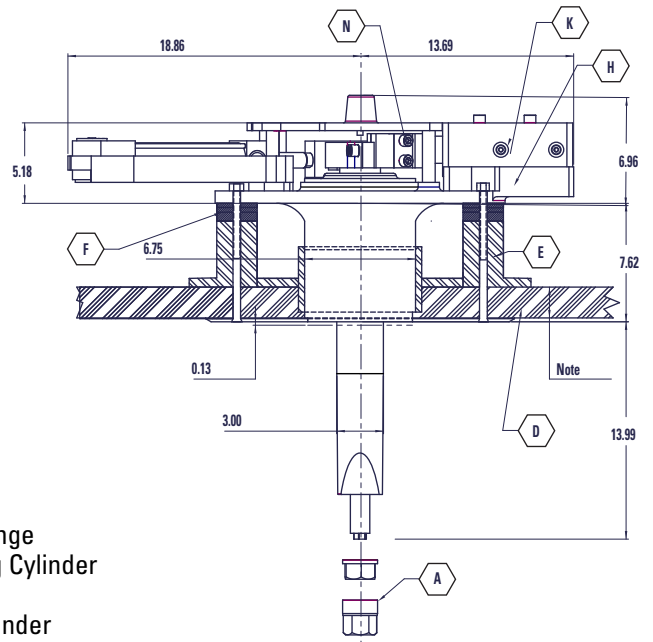


Dimensions shown for reference only and are subject to change. Do not use for installation.

**Top View**



**Side View**



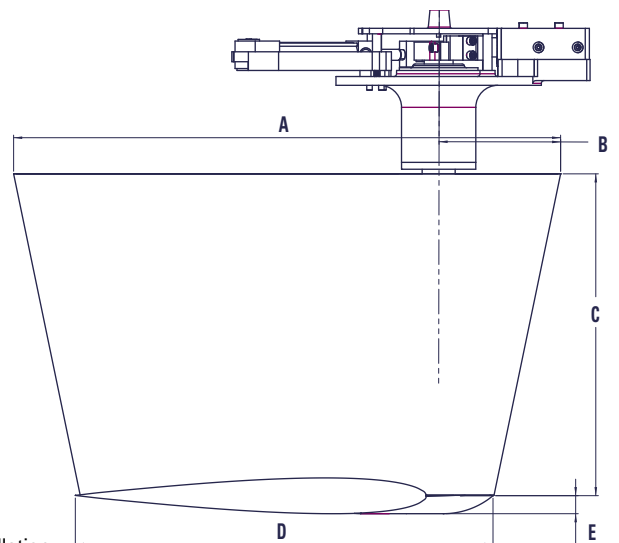
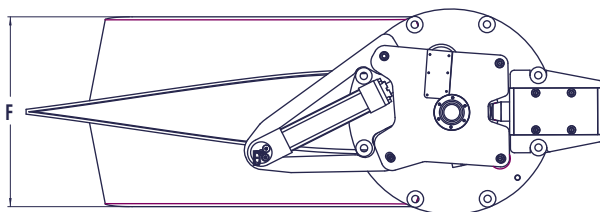
- A. Fin Nut
- D. Augmented hull thickness (Note)
- E. Inboard Hull Flange
- F. Hull Flange Spacer
- H. Actuator Flange
- K. Yoke Locking Cylinder
- P. Top Plate
- S. Actuator Cylinder

**Note:**

It is the responsibility of the installer to determine what reinforcement measures should be taken to properly strengthen the hull for withstanding forces that may be encountered if the fin or the fin shaft strikes an immovable object while the vessel is underway. Recommendations made by Arcturus Marine are to be used as starting guidelines only.

FIN MEASUREMENTS			A	B	C	D	E	F
SIZE	Sq.ft.	m <sup>2</sup>	Inch (cm)	Inch (cm)	Inch (cm)	Inch (cm)	Inch (cm)	Inch (cm)
7.5X-9%	10.5	0.98	60.8 (154.5)	13.3 (33.8)	26.9 (68.3)	49.7 (126.2)	2.1 (5.4)	15.5 (39.3)
9.0X-9%	13.1	1.22	68.7 (174.5)	15.1 (38.4)	29.2 (74.1)	56.1 (142.4)	2.7 (6.8)	22.1 (56.1)

**Top View**

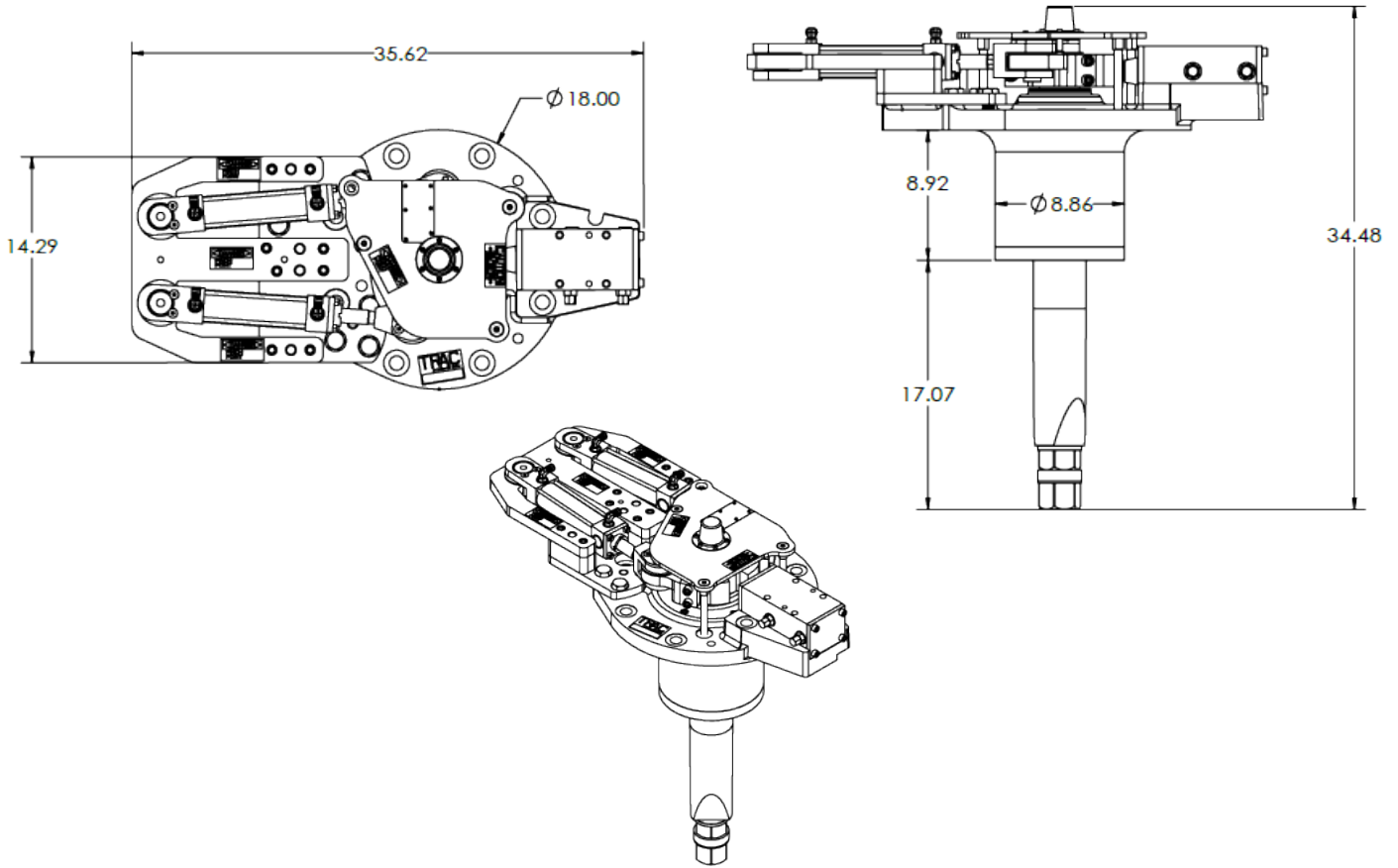


Dimensions shown for reference only and are subject to change. Do not use for installation.

# ABT·TRAC<sup>®</sup>

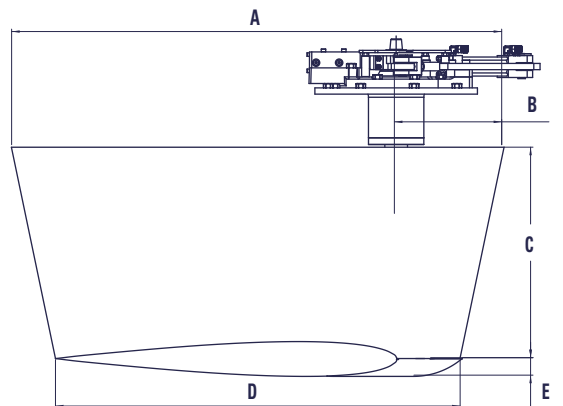
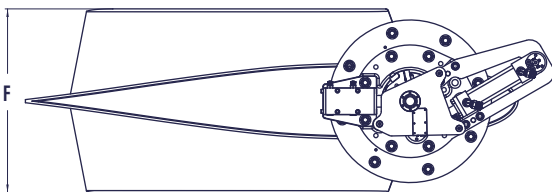
# 370

DIGITAL HYDRAULIC STABILIZERS



FIN MEASUREMENTS			A	B	C	D	E	F
SIZE	Sq.ft.	m <sup>2</sup>	Inch (cm)	Inch (cm)	Inch (cm)	Inch (cm)	Inch (cm)	Inch (cm)
12.0X	17.4	1.62	80.0 (203.2)	17.5 (44.5)	33.8 (85.9)	66.9 (169.9)	2.8 (7.1)	29.4 (74.7)
16.0X-9%	21.8	2.03	90.9 (231.0)	19.9 (50.5)	38.6 (98.0)	75.9 (192.9)	2.8 (7.1)	22.1 (56.1)

Top View



Dimensions shown for reference only and are subject to change. Do not use for installation.