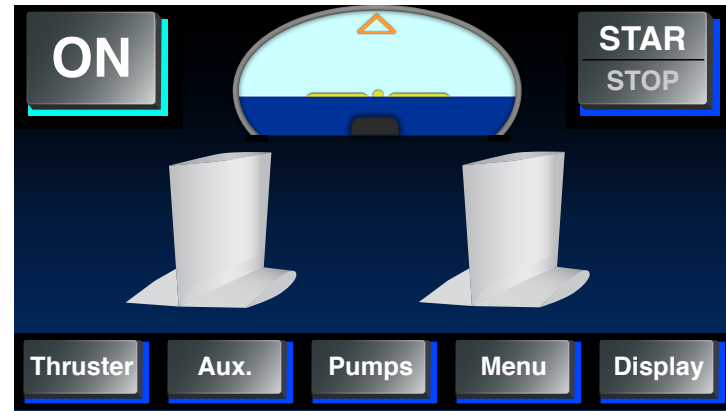
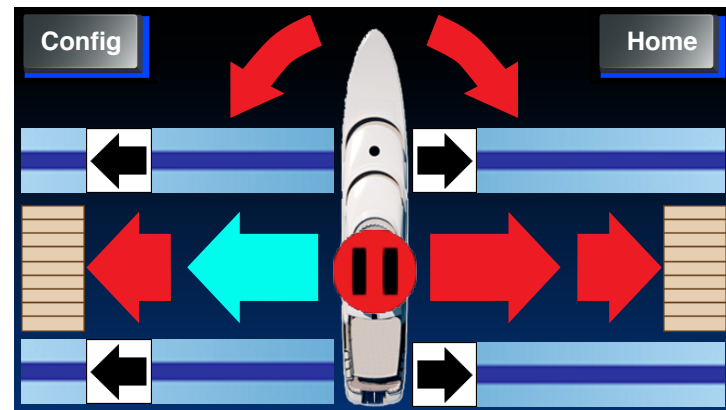


Pilothouse Panel Touch Screen Provides Full Control of all Loads

The TRAC Link Panel home screen provides complete stabilizer control and access to thruster and auxiliary load menus.



Bow and stern thruster control is available via the Pilothouse Panel. Control options include Walk, Rotate, and Hold against dock. Bow and stern thrusters can also be individually controlled and set at any power level. Power balance between bow and stern thruster can be set up in the Config menu.



Dual windlass control is available on vessels so fitted. Windlass raise and lower can be controlled from the Pilothouse Panel.



TRACLink™

Integrated CAN Bus Control for Stabilizer, Thrusters, and Auxiliary Loads



ABT·TRAC™

Stabilizers
Thrusters
Hydraulics

TRAC Link Configurable CAN Bus Control

The TRAC Link Pilothouse Panel provides easy installation, set-up of stabilizers and full control of thrusters, stabilizers, and dual windlasses. Hydraulic system monitoring of oil temperature level and pressures is standard. Complete hydraulic pump selectability is included. Custom support for any other auxiliary load is a factory option.



Pilothouse Panel

Thruster Control Stations

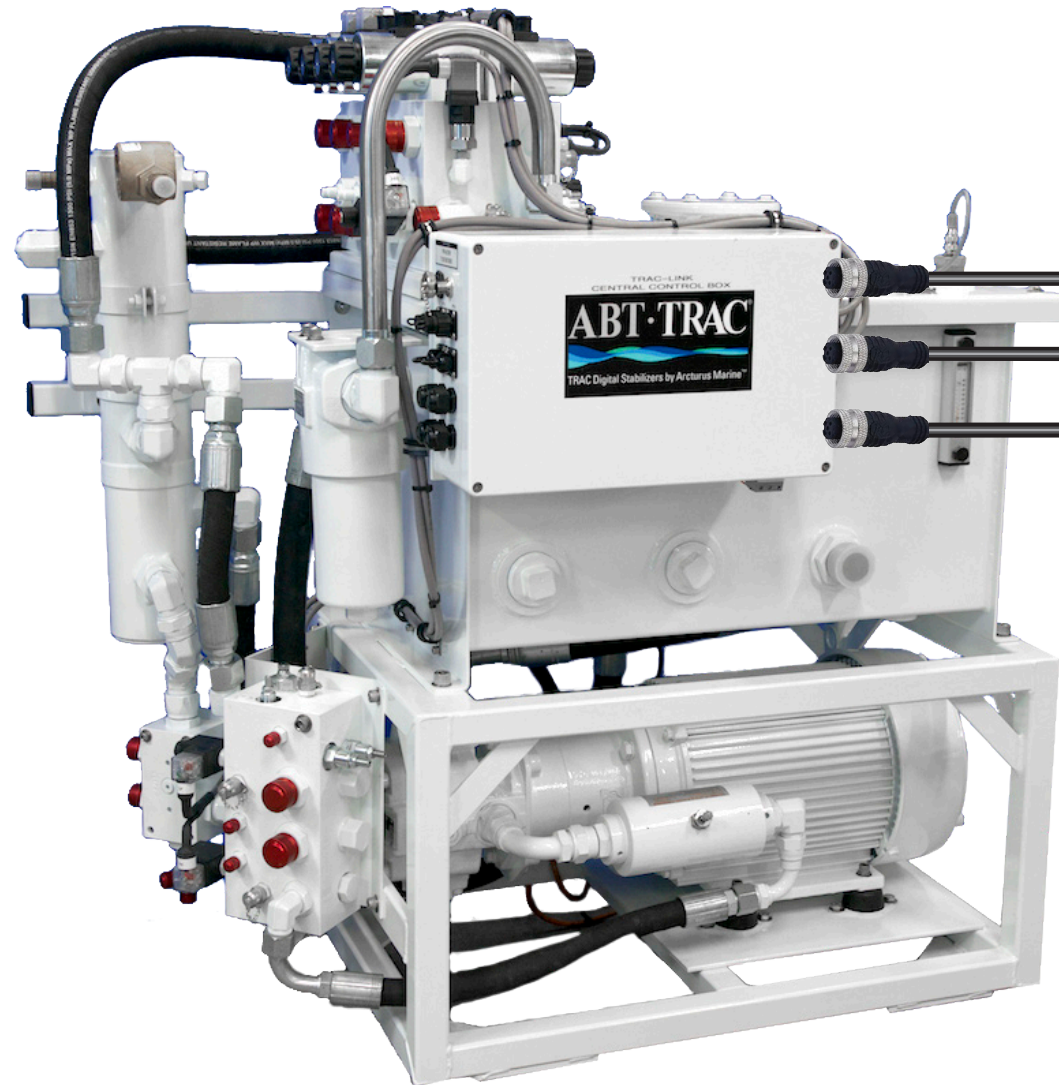


Standard duty off-the-shelf CAN Bus cable connects Thruster Control Stations and Pilothouse Panel.



TRAC Link Reservoir Module

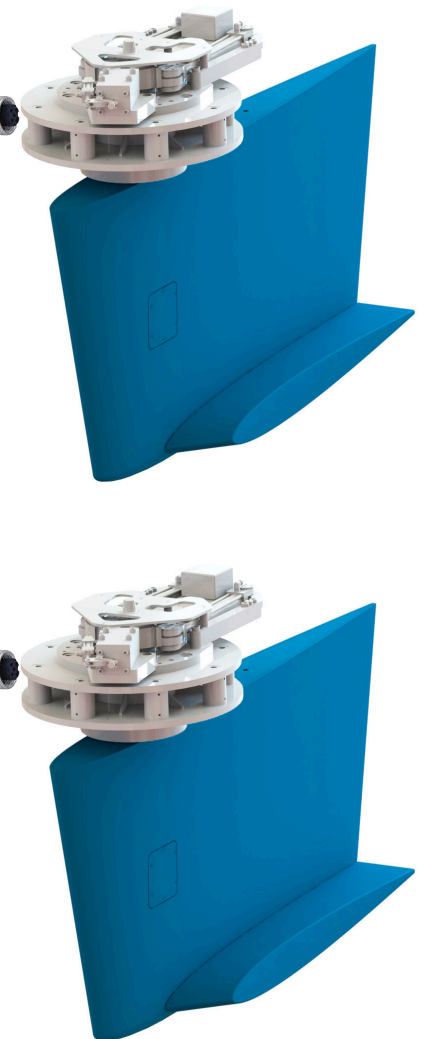
Thruster, windlass, pump control, and auxiliary load valving can be pre-installed, plumbed, and wired on the TRAC Link reservoir.



The primary CAN Bus trunk line originates at the reservoir module. Dedicated high current CAN Bus outputs support the stabilizer modules without the need to run separate power conductors.

Stabilizer Actuators

Off-the-shelf high current CAN Bus cables provide complete control connectivity to stabilizers. No need for expensive, hard-to-run multi-conductor cables.



ABT·TRAC™